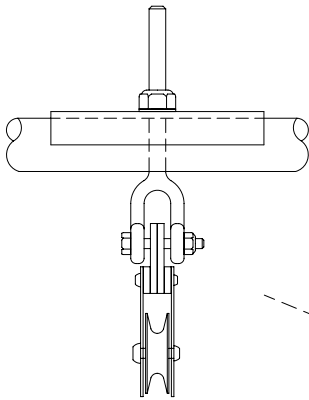


2" DIA. x 1/4 WALL
x 8 FT. MAST
6061-T6 TUBE

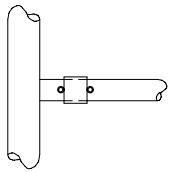
TOP PLATE AND
LOWER PLATE TO
SUIT CUSTOMERS
REQUIREMENTS

"C" SECTION



ENLARGED VIEW
OF PULLEY ASS'Y.

"D" SECTION



ENLARGED VIEW OF
ROLLER (BCD-111)
ASSEMBLY TYP.

WINCH

40"

GENERAL NOTES:

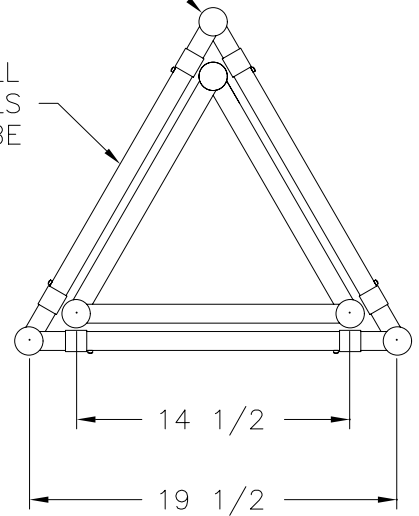
ALL DIMENSIONS ARE IN INCHES AND FRACTIONS, UNLESS OTHERWISE SHOWN.

THIS DRAWING IS THE PROPERTY OF ALUMA TOWER CO. INC. ANY DUPLICATION OTHER THAN ITS EXPRESSED PURPOSE, REUSE, MODIFICATION OR PLAGIARISM OF ANY PART OF THIS DOCUMENT IS PROHIBITED. VIOLATORS WILL BE PROSECUTED UNDER FLORIDA STATE STATUTES. DO NOT SCALE DRAWING.

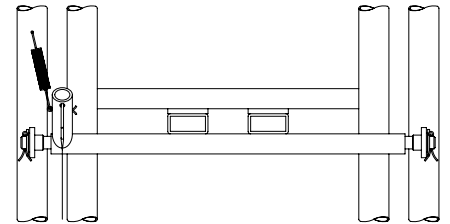
REV.	DATE	DESCRIPTION	BY
B	6-12-09	TOTAL HEIGHT OF TWO SECTIONS WAS 46'-10 1/2"	H.C.
A	8-3-00	ADDED SURFACE AREA	R.T.

1 1/2 DIA. x 1/8 WALL
LEGS 6061-T6 TUBE

1" DIA. x .049 WALL
RUNGS & DIAGONALS
6063-T832 DRAWN TUBE



CROSS SECTION



SAFETY STOP
D-563

PROPERLY INSTALLED THIS TOWER WILL SUPPORT 25 SQ. FT. OF ANTENNA SURFACE AREA TO 80 MPH. PROPER INSTALLATION REQUIRES THAT THE LOWER SECTION OF THE TOWER BE BRACKETED TO A STRUCTURE AT A MINIMUM OF 6 FEET OR THAT THE LOWER SECTION BE GUYED. THIS TOWER TERMINATES AT THE TOP WITH OUR "C" SECTION AND INCORPORATES A PLATE WHICH WILL ACCEPT AN ANTENNA ROTOR OR A FIXED (NON ROTATING) MAST. THIS TOWER IS IDEAL FOR YAGI, BEAM AND OTHER DIRECTIONAL ANTENNAS.

APPROX. TOWER WT. 150#

ALUMA TOWER CO. INC.

VERO BEACH, FL 32960

T-50XHD STANDARD
TOWER ASSEMBLY

DRWN BY:	SCALE:	DRWG. NO.
M.R.T.	FULL	QS-1000
DGN BY:	DATE:	REV. B
R.T.	7-14-97	
CKD BY:	APP'D	
R.T.		